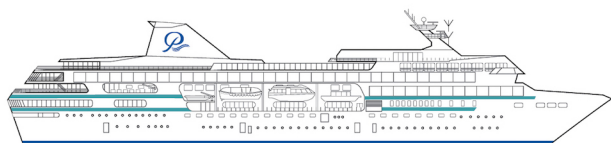


DECKPLANS



m/s Paul Gauguin

TRIPLE OCCUPANCY STATEROOMS

Loveseat, convertible beds are available in the following staterooms:

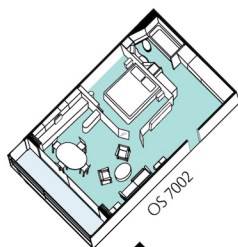
All Categories OS, GS, A, and B

Category C: 12 staterooms (those ending in 6 and 8 – with the exception of 7006 and 766)

Category D: 5 staterooms (those ending in 6 and 8)

Category E: 11 staterooms (those ending in 5, 6 and 8 – with the exception of 415, which can accommodate a rollaway bed)

Note: Loveseat beds are slightly smaller than a standard twin bed but can comfortably accommodate an average-size adult.



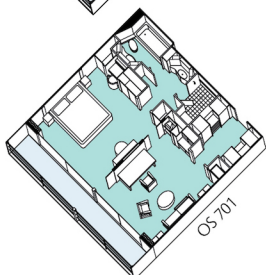
Owner's Suites

Owner's Suites include Butler service.

CATEGORY OS 7002 (588 square feet)

Stateroom: 531 sq. ft. | Veranda: 57 sq. ft.

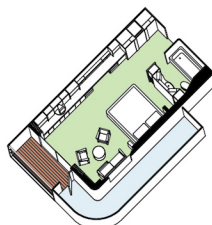
Bathroom includes a full-size tub and dressing area.



CATEGORY OS 701 (534 square feet)

Stateroom: 457 sq. ft. | Veranda: 77 sq. ft.

Bathroom includes a separate shower and a dressing area.



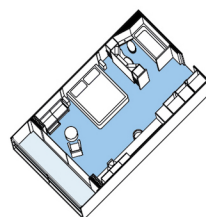
Grand Suite

Grand Suites include Butler service.

CATEGORY GS (529 sq. ft.)

Stateroom: 332 sq. ft. | Veranda: 197 sq. ft.

Paul Gauguin Suite (801) with king-size bed, Flora Tristan Suite (802)



Veranda Suite

Veranda Suites include Butler service.

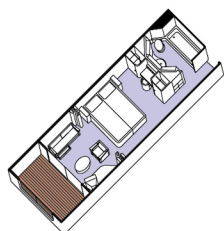
CATEGORY A (358 sq. ft.)

Stateroom: 300 sq. ft. | Veranda: 58 sq. ft.

CATEGORY A 7004 (349 sq. ft.)

Stateroom: 296 sq. ft. | Veranda: 53 sq. ft.

Tahiti Suite (709), Pont Aven Suite (710), Atuona Suite (711), Arles Suite (712)



Veranda Stateroom

Veranda Staterooms include Butler service.

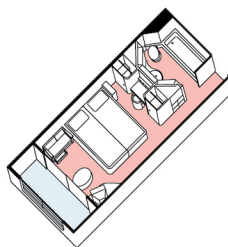
CATEGORY B (305 sq. ft.)

Stateroom: 249 sq. ft. | Veranda: 56 sq. ft.

CATEGORY B 7003 (303 sq. ft.)

Stateroom: 256 sq. ft. | Veranda: 47 sq. ft.

Stateroom 7003 features a shower stall with no tub.



Balcony Stateroom

CATEGORY C & D (239 sq. ft.)

Stateroom: 202 sq. ft. | Veranda: 37 sq. ft.

Staterooms ending in 6 & 8 have a third berth (except 7006 & 766). The following staterooms vary in size and feature shower stall with no tub:

7006 (stateroom 206 sq. ft. – balcony 37 sq. ft.) features a very small bathroom with shower only

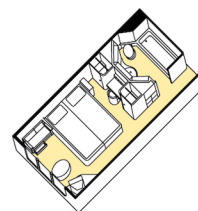
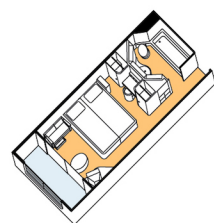
763 (stateroom 186 sq. ft. – balcony 75 sq. ft.)

764 (stateroom 188 sq. ft. – balcony 75 sq. ft.)

765 (stateroom 221 sq. ft. – balcony 74 sq. ft.)

766 (stateroom 216 sq. ft. – balcony 70 sq. ft.)

767 (stateroom 229 sq. ft. – balcony 74 sq. ft.)



Window Stateroom

CATEGORY E (200 sq. ft.)

Stateroom: 202 sq. ft. with picture window

Stateroom 415 is slightly larger (225 sq. ft.) and is wheelchair accessible.

Category F is same size and layout with two portholes.

CAPACITY..... 332 Guests
CREW..... International
CREW-TO-GUEST RATIO... 1:1.5, one of the highest of any cruise ship
OFFICERS European and International

REGISTRY..... Bahamas
SHIPYARD Chantiers de l'Atlantique (Saint Nazaire, France)
LENGTH..... 513'
WIDTH..... 71'

DRAFT..... 16.9'
TONNAGE 19,200 Tons
MAXIMUM SPEED..... 18 Knots
PASSENGER DECKS 7
CALL LETTERS..... FNPG
PROPULSION SYSTEM... Diesel Electric

Paul Gauguin CRUISES