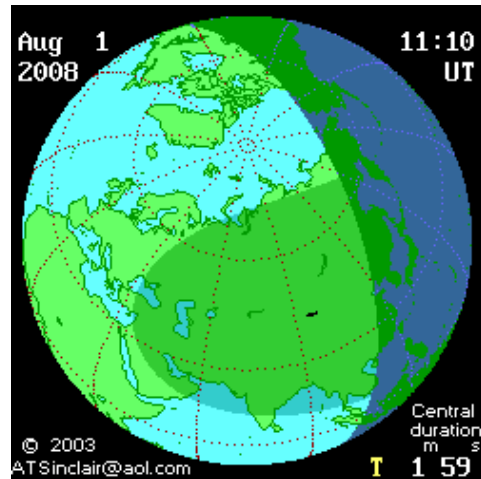


Visit our 2009 Eclipse Programs!

Join TravelQuest International and *Sky & Telescope* on an amazing **North Pole Flight Through Totality** to witness the total eclipse of the Sun on August 1, 2008. In partnership with LTU International Airways and Deutsche Polarflug, Germany, our exclusively chartered aircraft will leave from the easily accessible Köln/Bonn airport in Germany. We'll intercept the Moon's shadow over the Arctic Ocean and experience more time in totality than is possible from anywhere on the ground.

For this rare opportunity, we have assembled a technical team that includes *Sky & Telescope's* J. Kelly Beatty and astronomer Dr. Glenn Schneider. The expertise of these veteran eclipse-chasers proved invaluable in planning and executing two highly successful airborne intercepts of the [November 2003 total solar eclipse](#) over Antarctica.



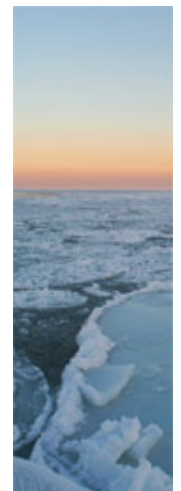
This flight has been chartered for the dual purpose of viewing the Total Solar Eclipse and flightseeing over the Arctic and North Pole. TravelQuest is handling bookings for eclipse viewing, while Deutsche Polarflug is handling bookings for flightseeing only (no view of totality). We are working cooperatively to ensure that the flight plan allows our eclipse chasers to view totality and to enjoy flightseeing en route to and from the North Pole.

To further assure great eclipse viewing for everyone aboard, we are limiting the capacity on our Airbus 330-200 aircraft. Before and after the eclipse, there will be plenty of room to move around and view from both sides of the aircraft, all the while enjoying expert commentary on the eclipse, North Pole geography/history, and the natural wonders below us. Our flight will also include international-class food and beverage service.

Don't miss this chance to see a total solar eclipse from our "flying observatory" high above the Earth. Capacity is extremely limited, so reserve your seats today!

[Click for Latest Eclipse Updates by Dr. Glenn Schneider](#)

TRAVELQUEST



Program Itinerary

Day 1 Thursday, July 31, 2008

Arrive Düsseldorf International Airport, Germany

Eclipse-flight participants from around the world arrive at Düsseldorf International Airport (DUS) according to their own flight schedule and transfer to their hotel.

Join us late this afternoon at the Intercity Hotel Düsseldorf for a mandatory briefing to provide final details for our flight. You'll also meet *Sky & Telescope's* J. Kelly Beatty, in-flight eclipse consultant Dr. Glenn Schneider, and our LTU flight crew.

OPTIONAL 2-Night Düsseldorf add-on package

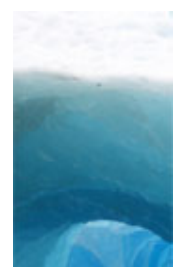
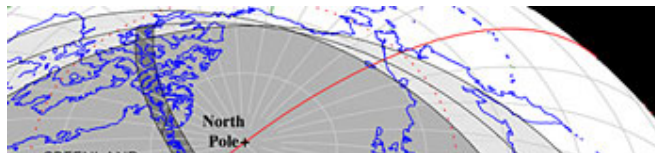
Day 2 Fri, August 1

In Flight Food Service

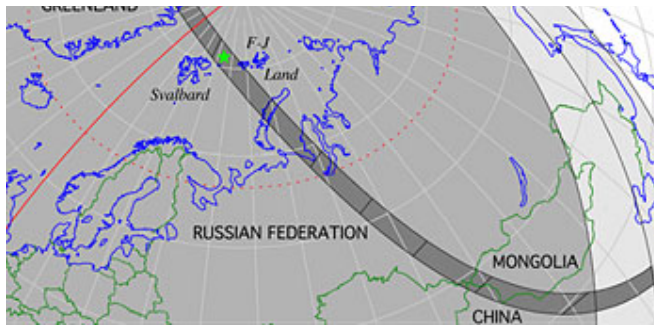
Flight through Totality!

In the very early morning, we meet at Köln/Bonn Airport (CGN) to board our chartered LTU International Airways Airbus 330-200 aircraft and begin the 12-hour Flight Through Totality. Once over the Arctic Ocean we continue northward for a fly-over of the geographic North Pole. Then, less than 9° from the Pole, we experience the total solar eclipse from the pristine, dark, and cloud-free skies at least 10,700 meters (35,000 feet) above sea level. **Flying above 75% of the Earth's otherwise murky atmosphere virtually ensures that our view of this cosmic spectacle will be unhindered by clouds and will provide sky darkness and transparency impossible to achieve from the ground.**

A wide range of possible flight plans have been developed by our technical team. The westernmost option intercepts the centerline of the eclipse path (mid-eclipse) at 02:14:53 Universal Time

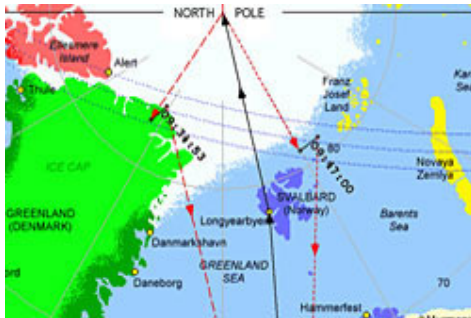


9:34:33 Universal Time, corresponding to longitude 32° 24' W, latitude 83° 20' N, along the northeast coast of Greenland. From this location, the Sun will be 20° above the true horizon, and totality will last 2 minutes 40 seconds — 13 seconds longer than is possible from the ground.

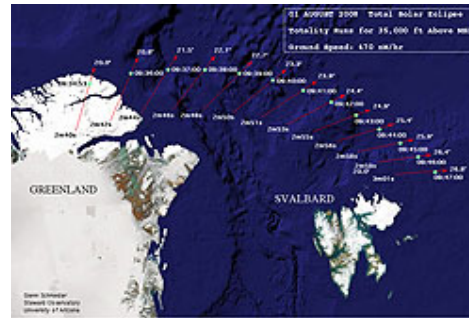


However, if passenger load and meteorological conditions permit, our intercept point will be shifted eastward to afford more time in totality. The easternmost option intercepts the centerline at 9:47:00 UT, corresponding to longitude 33° 43' E, latitude 81° 4' N (midway between Svalbard and the west coast of Franz Joseph Land). This vantage point would extend totality to a full 3 minutes.

The easternmost option intercepts the centerline at 9:47:00 UT, corresponding to longitude 33° 43' E, latitude 81° 4' N (midway between Svalbard and the west coast of Franz Joseph Land). This vantage point would extend totality to a full 3 minutes.



Flight Path Options - Press to Enlarge



Eclipse Durations - Press to Enlarge



Regardless of the path chosen, our LTU pilots will assume the final heading for our Totality Run approximately 6 minutes before totality begins (2nd contact) and maintain it for at least a few minutes after it ends (3rd contact). During this time the eclipsed Sun will be visible directly out the aircraft's right-side windows. Its altitude in the sky will range between 20° (at the westernmost intercept) to 27° (easternmost intercept).

Our chartered Airbus 330-200 aircraft is configured with 2-4-2 seating. Passengers in eclipse-viewing rows over the wing are additionally assigned a Flightseeing Row on the opposite side of the aircraft. *Passengers are guaranteed exclusive access only to the seats they have been assigned.* Note: During our "Totality Run," specific seats in eclipse-viewing rows will be required to be reclined or upright to offer optimal use of windows for eclipse viewing.

During the flightseeing periods before and after the eclipse, the center section (D,E,F,G) of rows 15-34 will be available for those passengers who want to relax, visit with others, or rest during the flight. All other center-section seats will be reserved for Deutsche Polarflug's flightseeing passengers.

Upon our return to Germany in the afternoon, our Flight Through Totality concludes with arrival at Düsseldorf International Airport (DUS), *a one-hour drive from our morning departure airport.* Participants in the [Düsseldorf add-on package](#) will be transferred back to the city.

To learn more about the logistical aspects of this flight, visit astronomer [Dr. Glenn Schneider's website](#).

Eclipse Flight Highlights

Of course, you won't want to look out the window only during the solar eclipse — the scenery below will be breathtaking throughout the entire flight. Our route crosses southern Norway and the Norwegian and Greenland seas, entering the zone of the "the midnight Sun" once we reach latitude 72° N. As we approach Svalbard, a large Norwegian island with many Russian inhabitants, you'll gaze down on the rugged mountains and fjords along its west coast. We cruise onward over the vast Arctic ice pack, then fly over and circumnavigate the geographic North Pole before our precise rendezvous with the Moon's shadow. When we're not concentrating on the eclipse, we'll enjoy expert commentary about the natural history of the North Pole and the Arctic region's many sights.

