

- 
- 
- 
- 
- 
- 
- 
- 
- 
- 
- 
- 
- 
- 

TravelQuest International  
305 Double D Drive  
Prescott, AZ 86303 USA

# French Polynesia

**TRAVELQUEST**  
International

TravelQuest invites you to join us for a rendezvous with totality on July 11, aboard the 320-guest, 5-star luxury ship, Paul Gauguin.

**ECLIPSE  
CRUISE  
6-13 JULY  
2010**

**E**njoy balmy days, sultry nights and panoramas that could only have been created by Nature in her finest hour. Our stellar panel of experts will present astronomy and eclipse related lectures leading up to and following the eclipse. Eclipse Day will find us on the centerline at sea in French Polynesia, where we will experience 4 minutes of totality.

The tour has completed.

At the turn of the century, impressionist Paul Gauguin traveled to the tropical shores of French Polynesia to create some of his most renowned masterpieces. Today his namesake, our privately chartered m/s PAUL GAUGUIN, will transport our small group to the same romantic Tahitian vacation paradise - to experience, explore and to witness the July 11, 2010 Total Solar Eclipse.

From our specially selected eclipse viewing site at sea, southeast of Tahiti, we will experience 4 minutes of magnificent totality. We'll begin our special voyage in Tahiti and include visits to the former religious and political heart of Polynesia - Raiatea; the private paradise of Motu Mahana; and the legendary delights of Bora Bora.

Since the eclipse will be visible only within a narrow band of the Southern Hemisphere, we'll take a day at sea on the Pacific Ocean to reach our ideal spot to view a full 4 minutes of totality. While weather prospects for eclipse viewing are good, our ship's mobility at sea will increase our chances of seeing this awe inspiring celestial event. During our time at sea you are invited to join our Astronomy Lecture Program featuring some of the world's most respected astronomy and eclipse experts.

In mid-2009, TravelQuest will announce to those under reservation for this cruise a very special optional add-on excursion from Tahiti to amazing [Easter Island](#).

This is your opportunity to experience the ultimate in relaxation, explore remnants of Polynesian dynasties, and witness the incredible natural majesty of a total solar eclipse. Do not miss the boat! Make your reservation today.

- 
- 
- 
- 
- 
- 
- 
- 
- 
- 
- 
- 
- 
- 

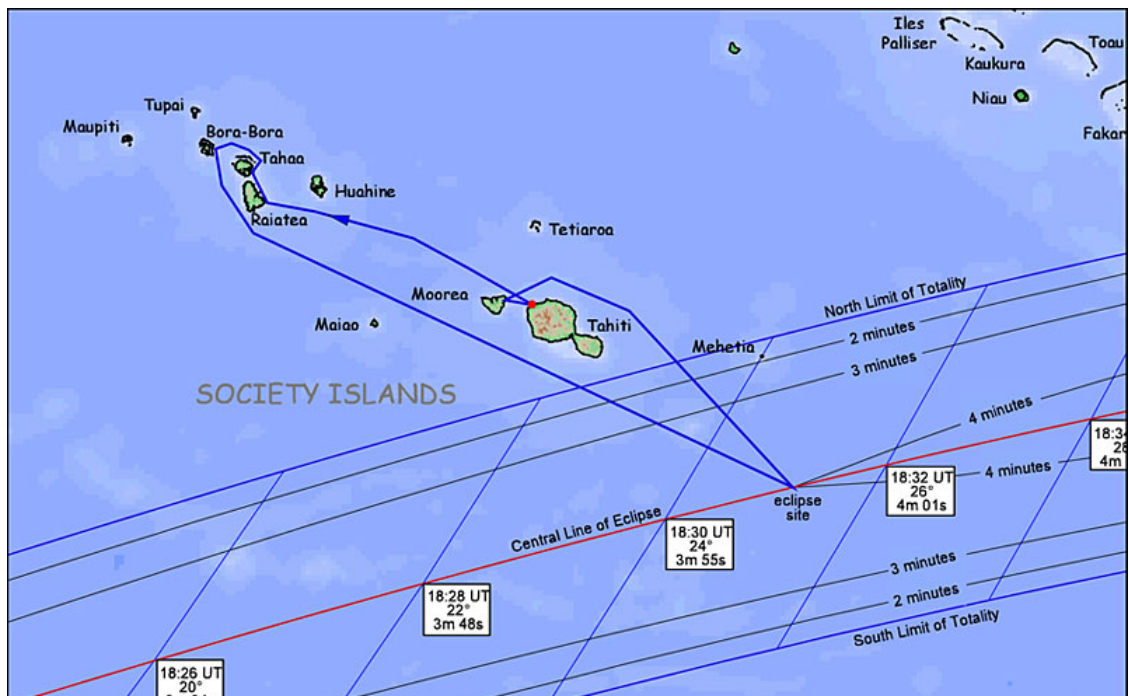


## Program Itinerary

### POLYNESIA TOTAL SOLAR ECLIPSE CRUISE July 6-13, 2010 - 8 Days/7 Nights

DAY	PORT	ARRIVE	DEPART
Optional 8 Day Easter Island/Tahiti Pre-Cruise Package			
1	Tue, July 6		22:00 hrs.
2	Wed, July 7	11:00	18:00
3	Thu, July 8	09:00	17:00
4	Fri, July 9	08:00	22:00
5	Sat, July 10		At Sea
6	Sun, July 11		<b>ECLIPSE DAY!</b>
7	Mon, July 12	08:00	17:00
		19:30	OVERNIGHT
8	Tue July 13	Debarik AM	

TravelQuest International  
305 Double D Drive  
Prescott, AZ 86303 USA



**2010 POLYNESIA ECLIPSE WEATHER PROSPECTS**  
by eclipse meteorologist Jay Anderson

In Tahiti, July is the second-driest month and at Hereheretue, in the Tuamotu Islands, July is the driest. This dry-season weather is reflected in the cloud cover statistics with average cloudiness dropping to between 44 and 53% across much of Polynesia. The frequency of thick cloud – stuff that would block the eclipse – is only about 32%. Sunshine statistics are also generous with very encouraging measurements of 65 to 70% of the maximum possible in most of the islands along the track.

Periods of bad weather are often associated with the passage of cold fronts that arrive from the southwest, sometimes lingering for several days. However, these large cloud systems are reluctant to push much beyond the island of Tahiti, and so our ship position, 200 km southeast of the island, positions us in a more promising climatology. Clouds in this area tend to be small and disorganized – typical of a tropical latitude – and so ship mobility will greatly aid us in finding an opening to view the eclipse. To find that spot, we'll be monitoring marine forecasts and hourly satellite images. Our ship's mobility will increase the chances of seeing the eclipse by 5% or perhaps a bit more - very nearly the best weather prospects that this eclipse has to offer anywhere along the track.



**Eclipse 2010 eclipse viewing times from 18° 36' South / 147° 20' West**

<b>1st contact:</b>	<b>17h 18m 41s UT</b>	<b>07h 18m 41s local time</b>	<b>altitude 11 degrees</b>
<b>2nd contact:</b>	<b>18h 30m 04s UT</b>	<b>08h 30m 04s local time</b>	<b>altitude 26 degrees</b>
<b>mid eclipse:</b>	<b>18h 32m 04s UT</b>	<b>08h 32m 04s local time</b>	<b>altitude 26 degrees</b>
<b>3rd contact:</b>	<b>18h 34m 05s UT</b>	<b>08h 34m 05s local time</b>	<b>altitude 26 degrees</b>
<b>4th contact:</b>	<b>19h 56m 51s UT</b>	<b>09h 56m 51s local time</b>	<b>altitude 40 degrees</b>

**Duration of totality: 4 minutes and 1 second. Local time is that of Tahiti. The ship's time may be different.**

